

BROOKLINE HIGH SCHOOL EXPANSION

BUILDING ADVISORY COMMITTEE
October 2, 2019



BHS ADVISORY COMMITTEE MEETING

1. MBTA Easement & Construction Licenses

2. Design Update

- MBTA / Cypress Building Plaza
- Brington Path

3. Budget and Schedule Update



BHS ADVISORY COMMITTEE MEETING

- **Brookline Hills Station Enabling Construction License for Entry signed August 8, 2019**
- **Final Easement, Escrow, full Construction License and all other legal documents received from MBTA September 27, 2019 ready for ToB execution**



BROOKLINE HIGH SCHOOL CAMPUS



PEDESTRIAN IMPROVEMENTS

KEY IMPROVEMENTS



1. WIDEN TAPPAN STREET SIDEWALK

A major pedestrian sidewalk links the new Cypress Building with the main high school building.

2. RAISE CROSSWALKS ALONG TAPPAN STREET

Raised crosswalks calm traffic and provide safer crossings at the UAB building and new Cypress Building.

3. DIRECT CONNECTION TO THE MBTA STATION

A direct pedestrian path links Davis Street to the Brookline Hills T station.

4. SEATING AND GATHERING ALONG TAPPAN

New seating areas at STEM, Tappan/Kirrane, UAB, and the MBTA plaza welcome pedestrians and provide gathering and waiting areas for students, staff, and the community.

5. CURB BULB OUTS ALONG TAPPAN STREET

New curb bulb outs slow traffic and define drop-off areas increasing pedestrian safety.

CYCLING IMPROVEMENTS

KEY IMPROVEMENTS



1. COMPLETE GREEN ROUTES AT BROOKLINE HIGH

Bike lanes on Davis, Greenough, and Tappan link Brookline's Green Routes around the Cypress Field

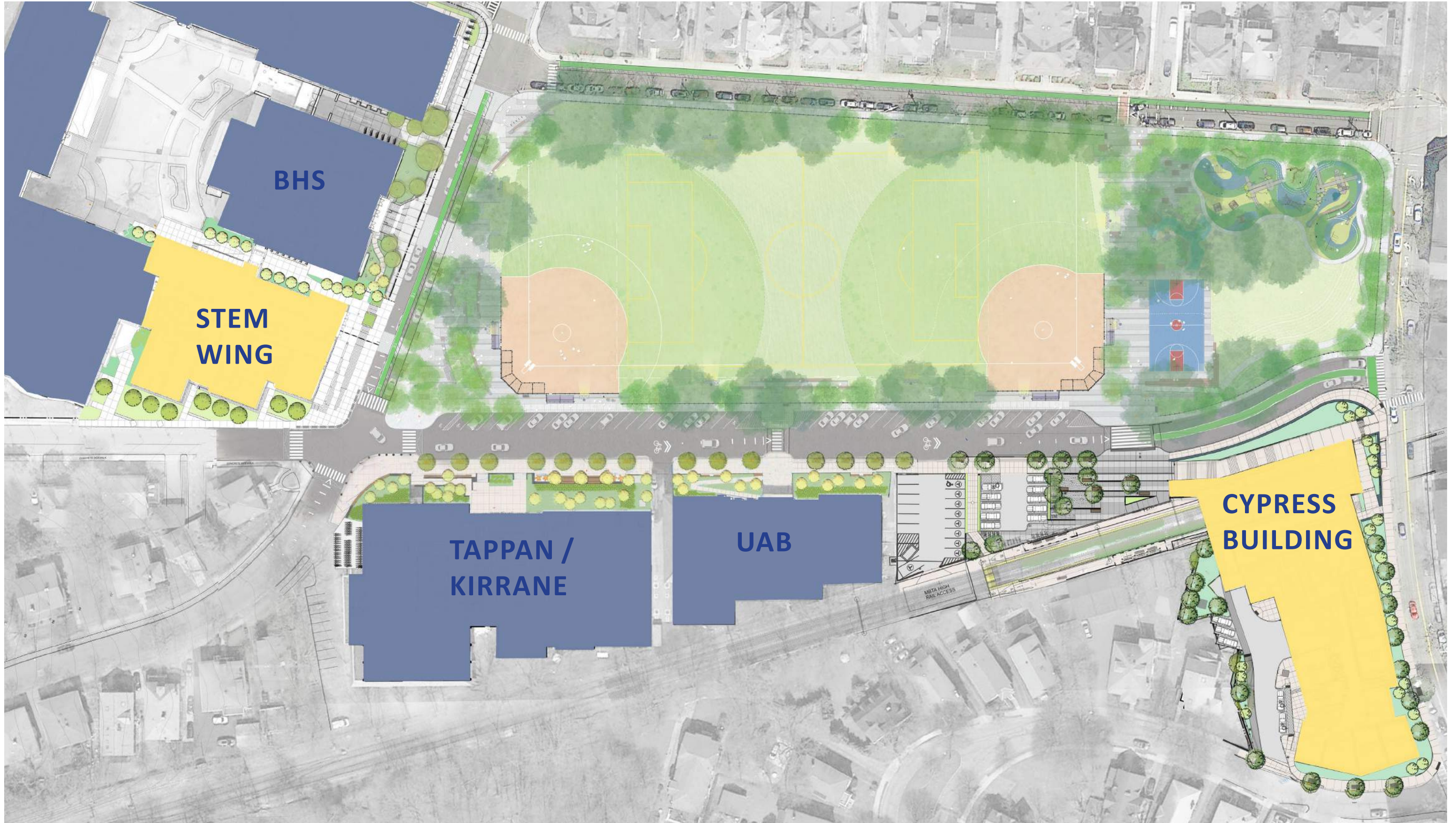
2. IMPROVE BIKE SAFETY ON BHS ROADWAYS FOR THE COMMUNITY

Bike lanes on Davis St, Greenough Street, and Tappan Street improve bicycle safety.

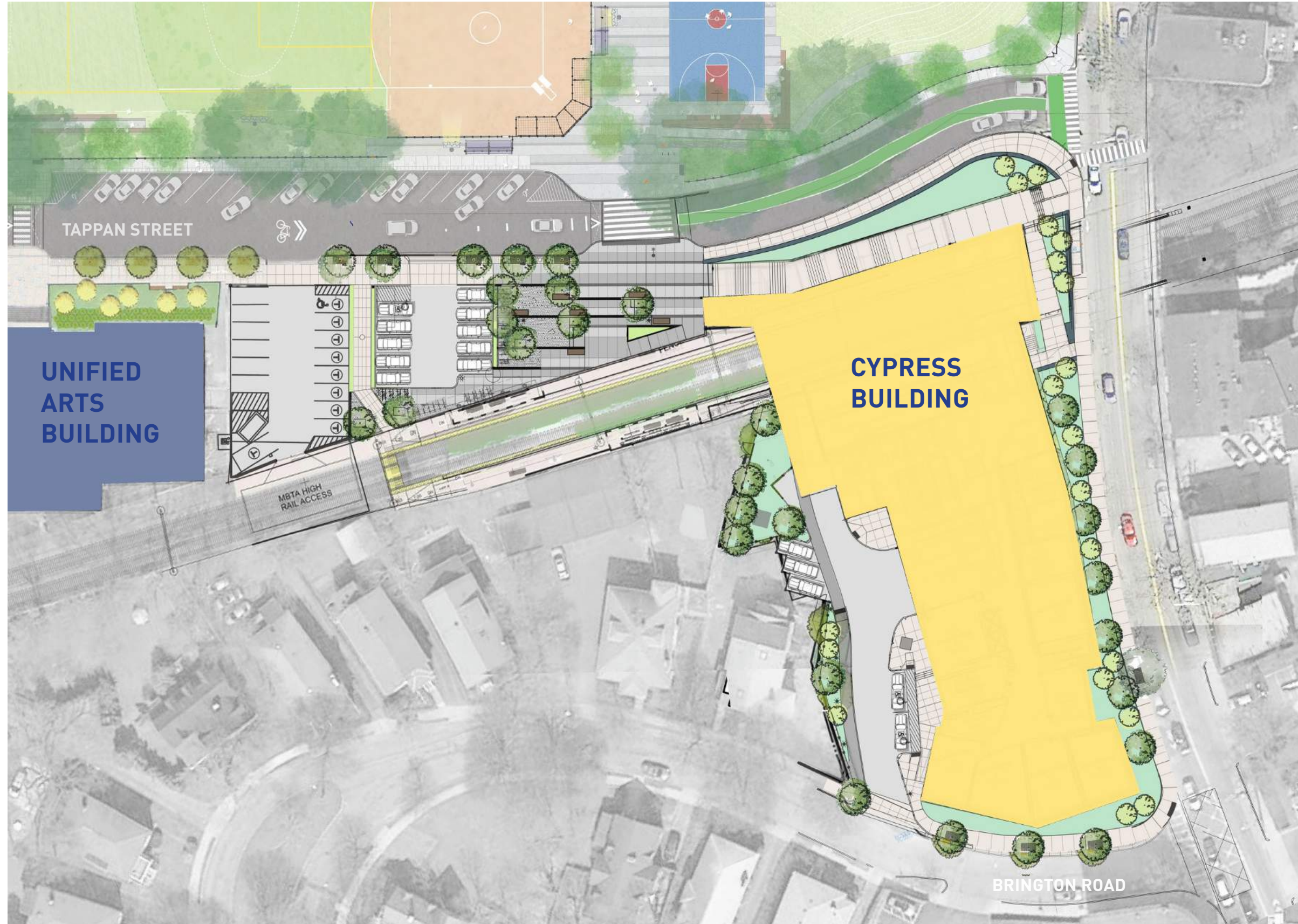
3. INCREASE BIKE PARKING CAPACITY BY 67%

89 bike parking spaces have been added to the BHS campus.

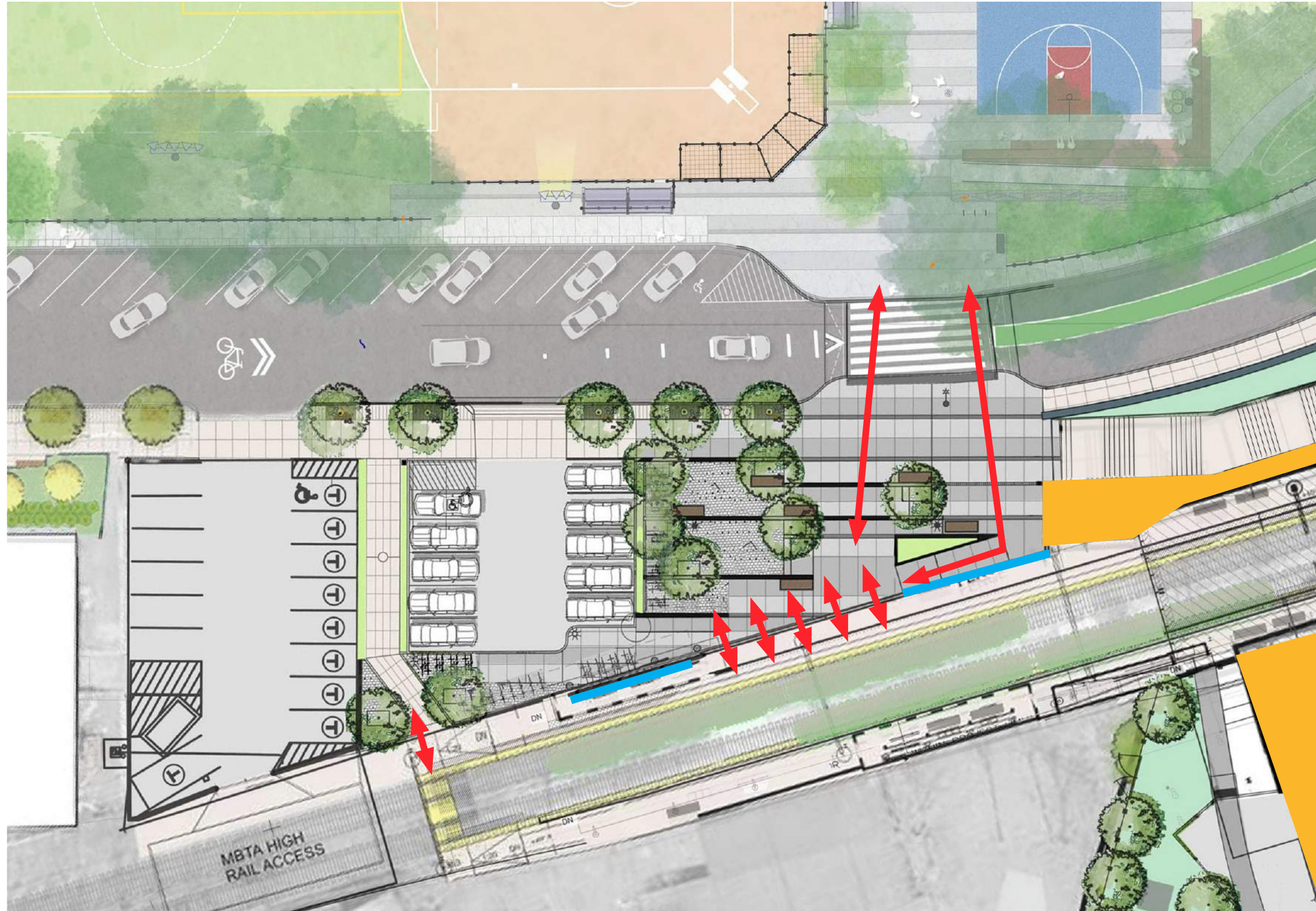
CAMPUS PLAN



CYPRESS BUILDING LANDSCAPE PLAN

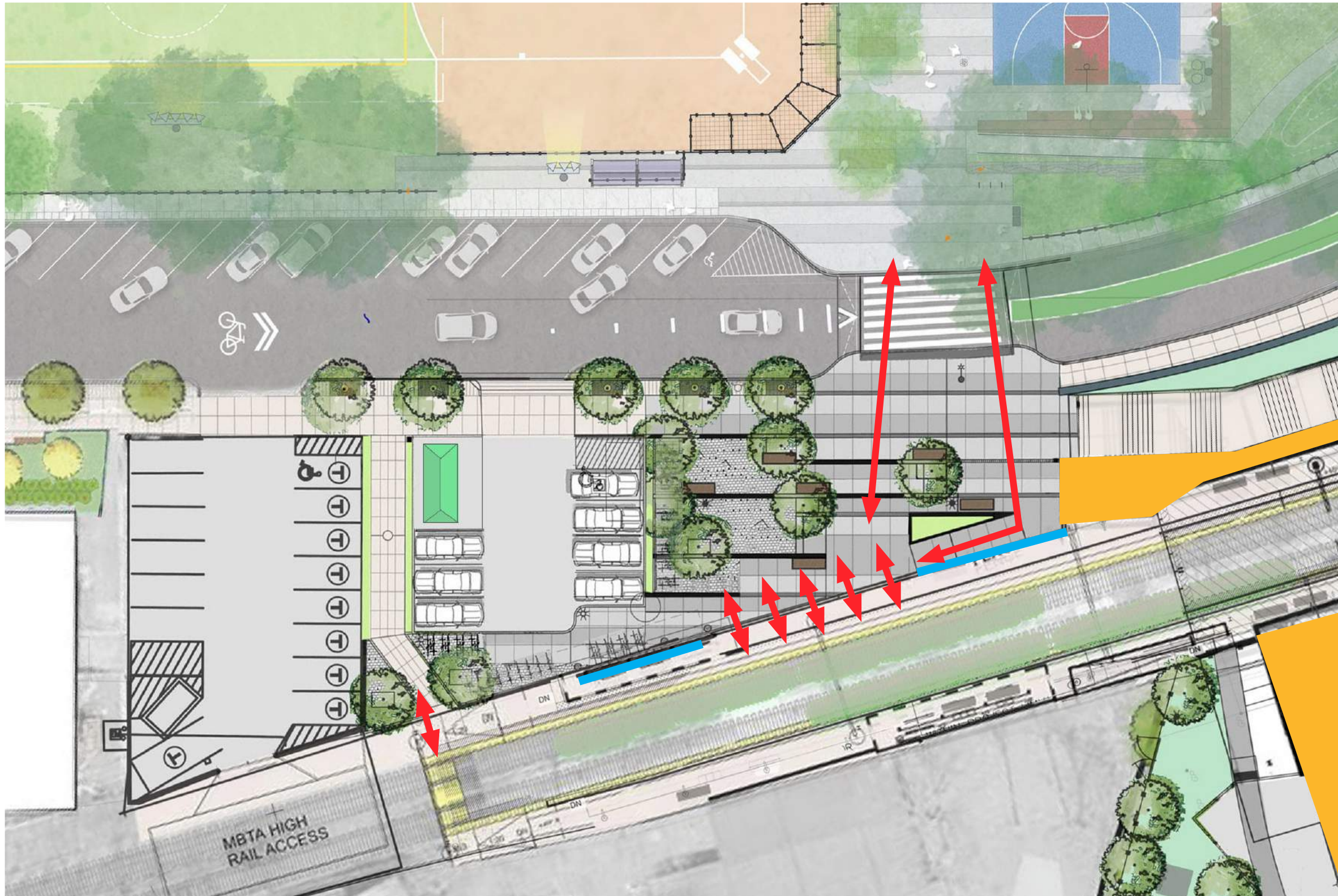


MBTA / CYPRESS BUILDING ENTRY PLAZA



MBTA ENTRY PLAZA: TEMPORARY FARE COLLECTION HUT

PENDING MBTA CONFIRMATION

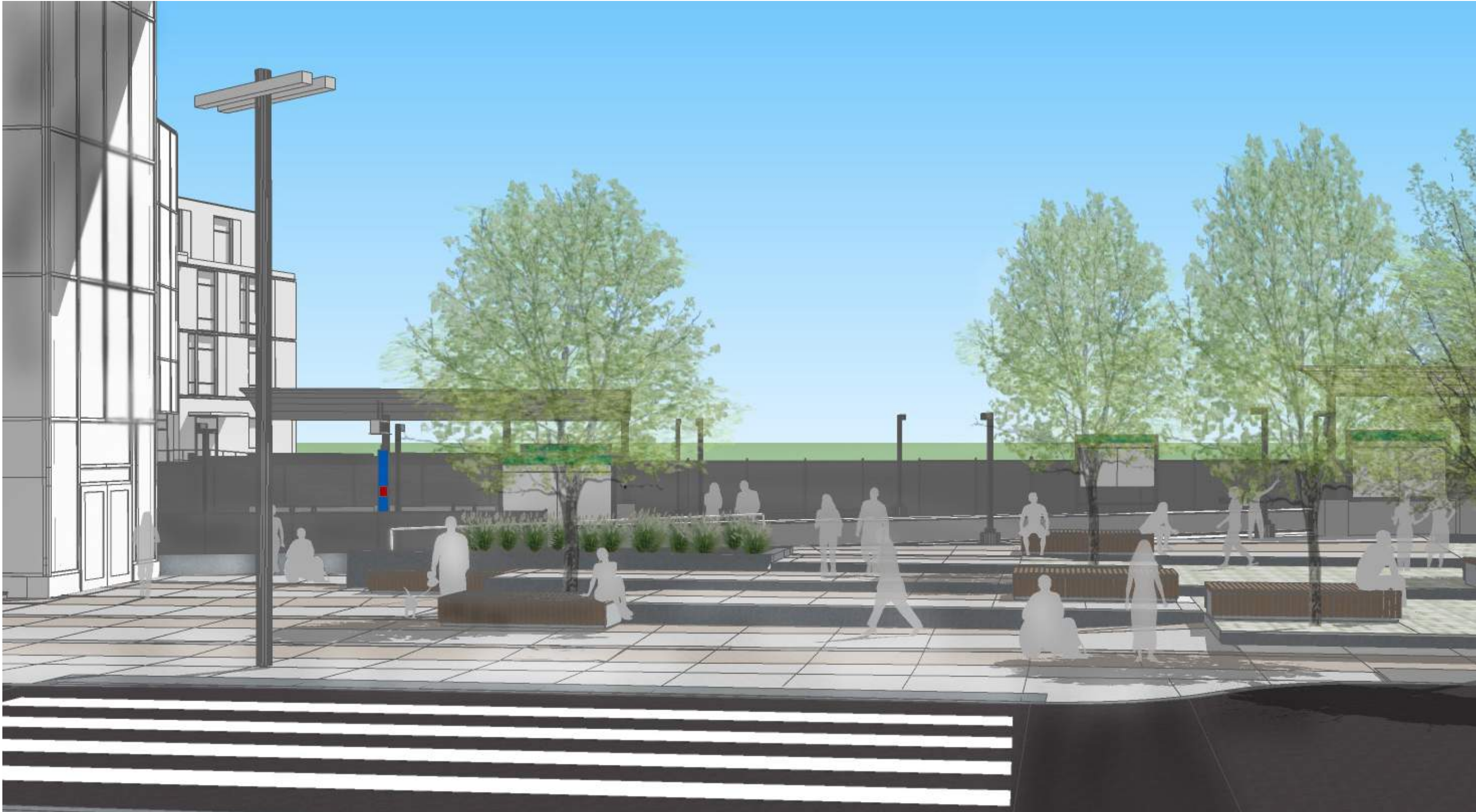


MBTA / CYPRESS BUILDING PLAZA EXISTING CONDITION



MBTA / CYPRESS BUILDING PLAZA DESIGN UPDATE

VIEW FROM TAPPAN ST CROSSWALK



MBTA / CYPRESS BUILDING PLAZA DESIGN UPDATE

AERIAL VIEW

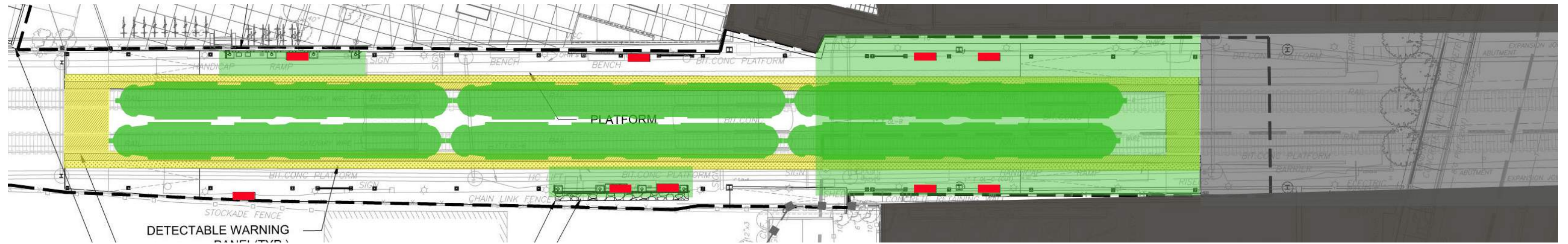


MBTA / CYPRESS BUILDING PLAZA DESIGN UPDATE

VIEW FROM BASE OF THE GRAND STAIRCASE



MBTA PLATFORM IMPROVEMENTS SUMMARY



EXISTING

CURRENT DESIGN

INBOUND PLATFORM

WEATHER PROTECTION SF:
BENCHES:

100 sq ft
18 lin ft

1,155 sq ft
30 lin ft

OUTBOUND PLATFORM

WEATHER PROTECTION:
BENCHES:

180 sq ft
22 lin ft

1,300 sq ft
25 lin ft

BIKE RACKS

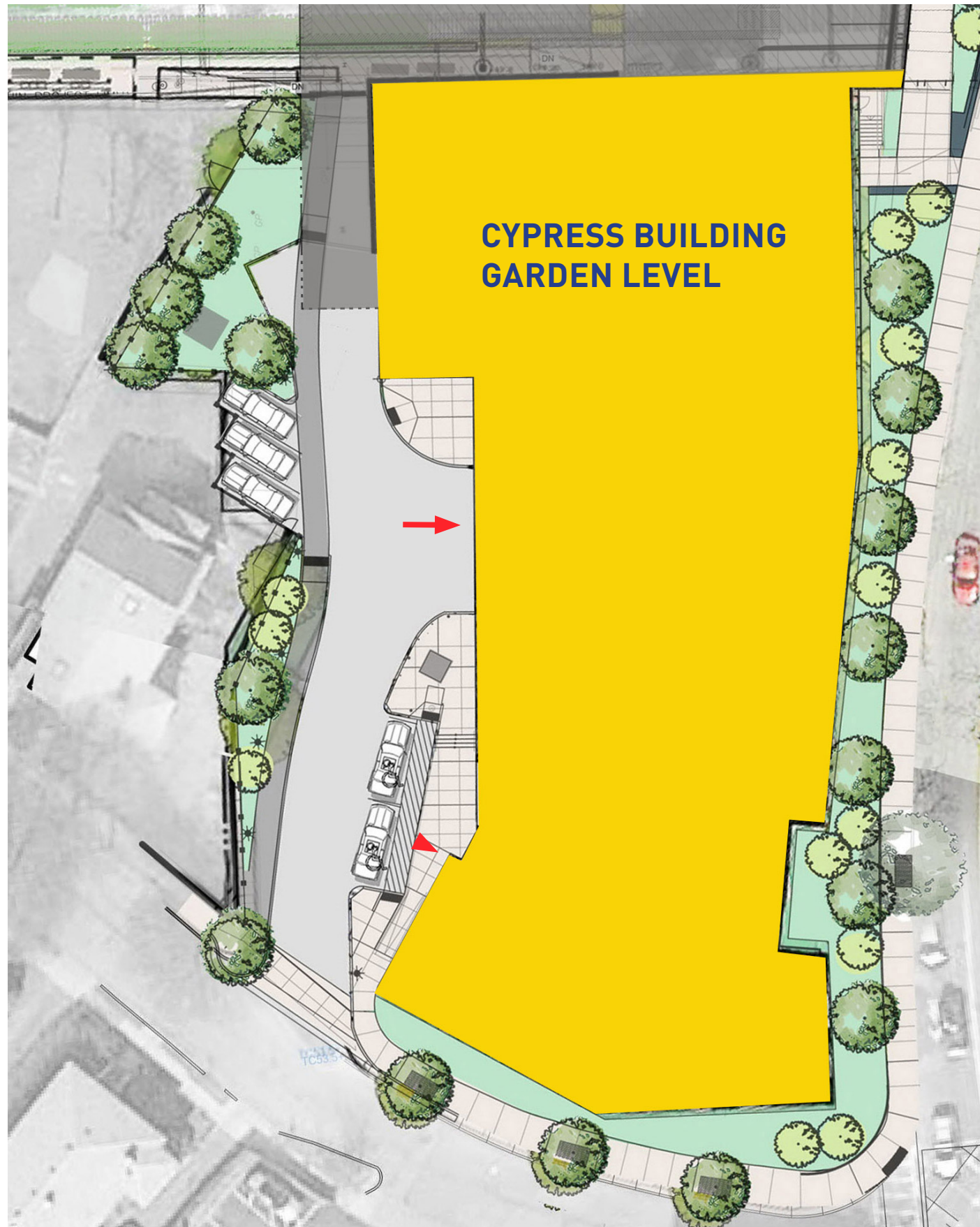
8 BIKES

32 BIKES

**1,225 riders / weekday (2014 MBTA Ridership and Service Statistics - 14th Edition)*



BRINGTON PATH - MBTA PLATFORM EGRESS



KEY IMPROVEMENTS

1. STRAIGHTER ROUTE

The accessible pathway has been straightened.

2. LANDSCAPE BUFFER

A landscape buffer provides more privacy for the neighbors to the west.

3. CURB BULB OUT MAINTAINED

Existing traffic calming curb profile relocated on Brington Rd.

4. ANGLED PARKING

Three deeded parking spaces have been angled for easier access.

5. LOW LIGHT LEVELS

Lighting provides code required light levels aimed away from the adjacent residence.

BRINGTON PATH / MBTA PLATFORM EGRESS - LIGHTING



CYPRESS CONSTRUCTION PROGRESS PHOTO



STEM CONSTRUCTION PROGRESS PHOTO



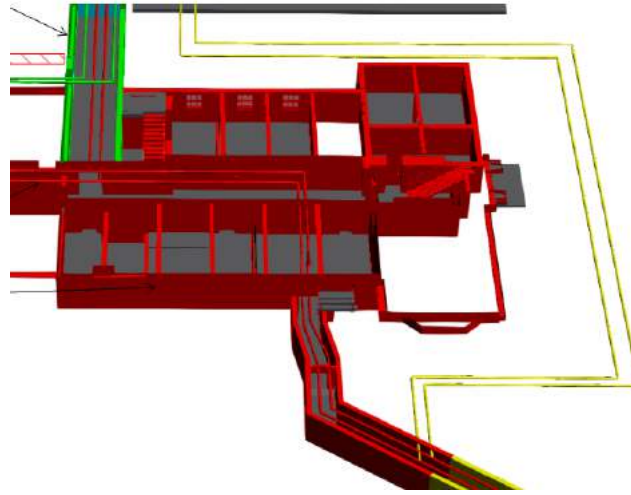
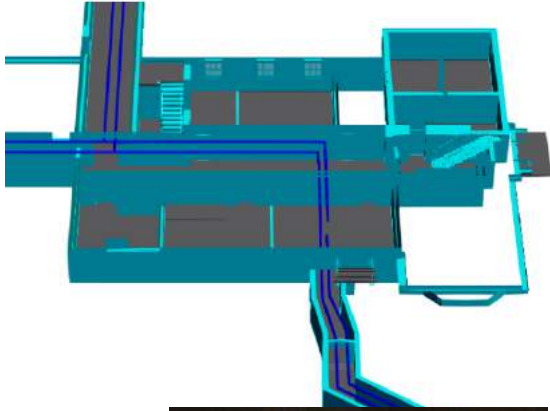
STEM ENABLING CONSTRUCTION PROGRESS PHOTO



SKANSKA BROOKLINE HIGH SCHOOL EXPANSION PROJECT: ENABLING WORK SUMMARY

Original Plan: Existing to Remain

Enabling Plan: Refeed Campus, New Basement



- 2 months duration
- 20,000 Man Hours
- \$7,500,000 in value

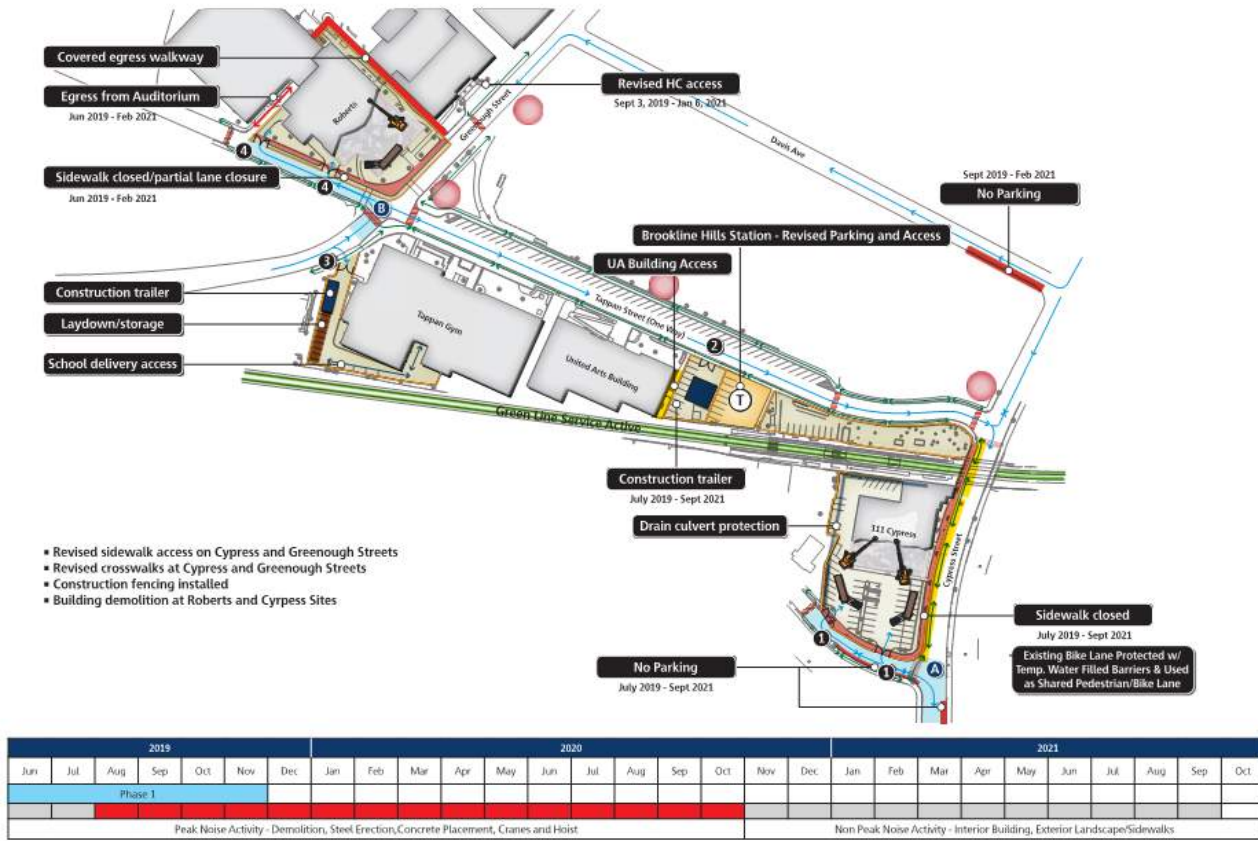
SKANSKA BROOKLINE HIGH SCHOOL EXPANSION PROJECT: CYPRESS PROGRESS



BHS Expansion Building Committee Meeting: October 2, 2019

SKANSKA BROOKLINE HIGH SCHOOL EXPANSION PROJECT: OVERALL LOGISTICS PHASE 1

SKANSKA



Phase 1 Mobilize, Site Fence, Field Office and Building Demolition

111 Cypress:

- Abatement
- Cut/cap utilities
- Building demolition
- Close sidewalks

Brookline Hills T:

- Mobilize
- Relocate parking
- Relocate ticket/pay park

Tappan Gym:

- Temporary service
- Set trailers
- Basement footings

Roberts:

- Relocate existing utilities
- Abatement
- Temporary interior walls
- Close courtyard outh access
- Building demolition

Traffic/Deliveries:

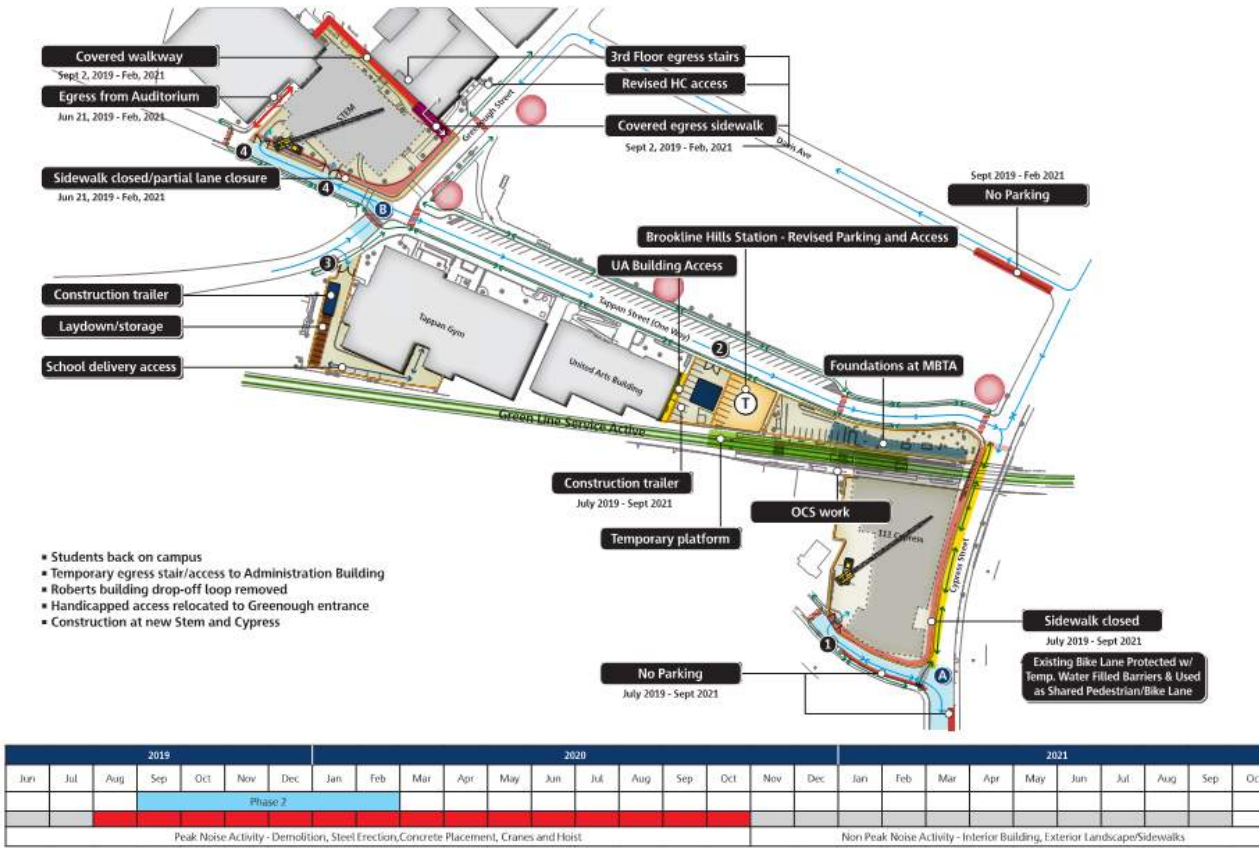
- 30 per day
- A** Traffic holds north & south at Cypress deliveries
- B** Traffic holds at Tappan/Greenough for deliveries
- Police details required

Construction Key

- Construction gate
- Construction fence
- Construction traffic
- Pedestrian flow
- Temporary crosswalk
- Muster area

SKANSKA BROOKLINE HIGH SCHOOL EXPANSION PROJECT: OVERALL LOGISTICS PHASE 2

SKANSKA



- Students back on campus
- Temporary egress stair/access to Administration Building
- Roberts building drop-off loop removed
- Handicapped access relocated to Greenough entrance
- Construction at new Stem and Cypress

Phase 2 Foundations, Steel and Utilities

- 111 Cypress:**
- Foundation/utilities
 - Start steel erection
 - Erect pre-cast platform over Green Line

- Brookline Hills T:**
- Build temporary platform
 - Relocate OCS

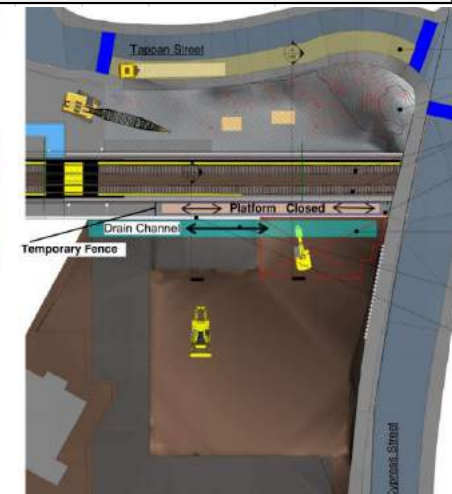
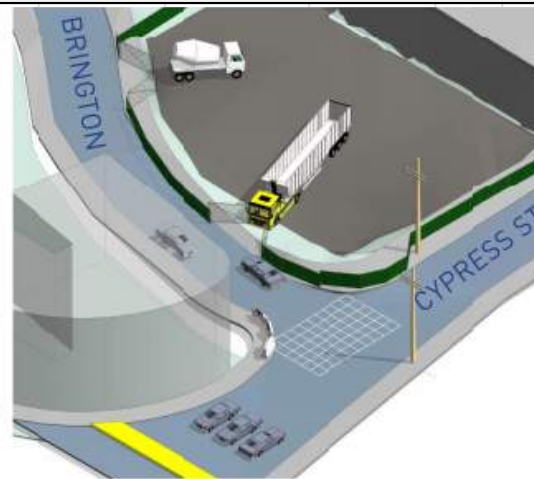
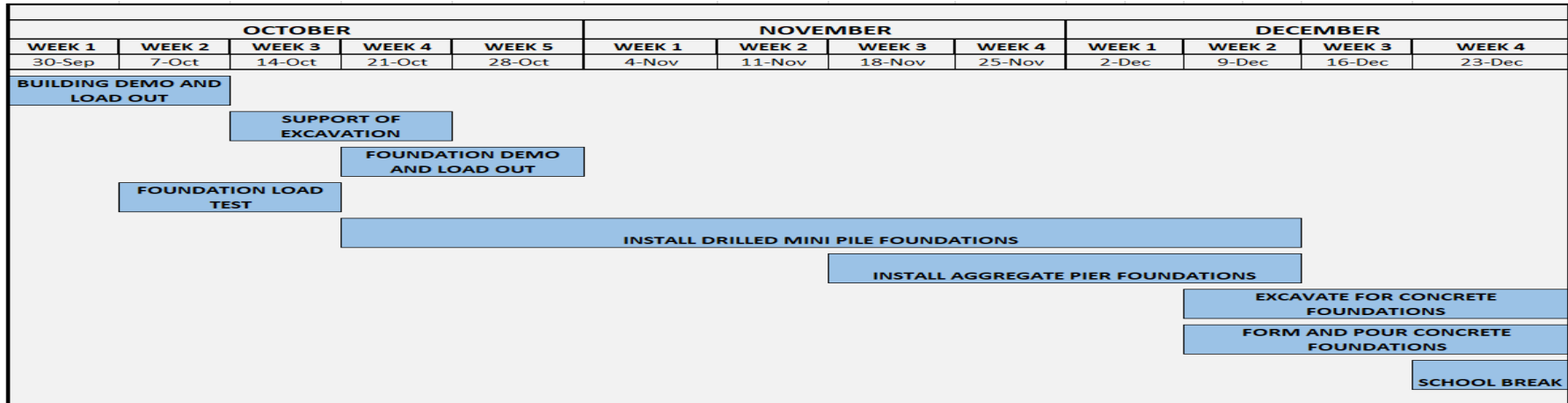
- STEM:**
- Foundations
 - Start steel
 - Site utilities
 - Covered sidewalk
 - Temporary 3rd floor egress stairs
 - Temporary auditorium egress

- Traffic/Deliveries:**
- 60 per day
 - A** Traffic holds north & south at Cypress deliveries
 - B** Traffic holds at Tappan/Greenough for deliveries
 - Police details required

Construction Key

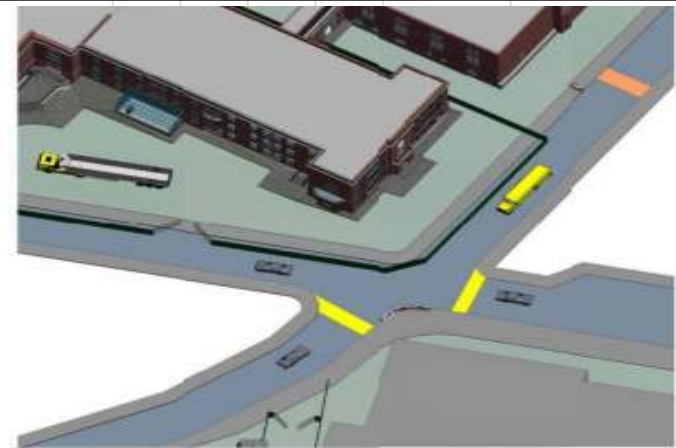
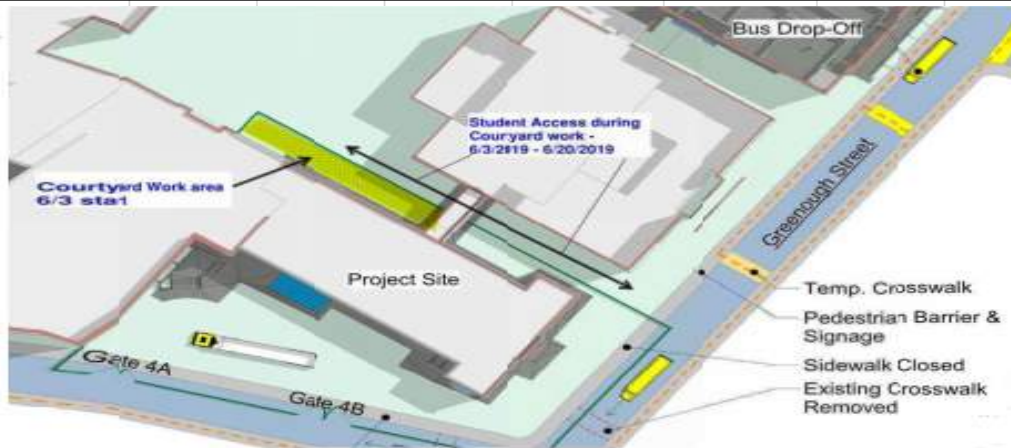
- Construction gate
- Construction fence
- Construction traffic
- Pedestrian flow
- Temporary crosswalk
- Muster area

SKANSKA BROOKLINE HIGH SCHOOL EXPANSION PROJECT: 111 CYPRESS 3 MONTH LOOK AHEAD



BHS Expansion Building Committee Meeting: October 2, 2019

OCTOBER					NOVEMBER				DECEMBER			
WEEK 1	WEEK 2	WEEK 3	WEEK 4	WEEK 5	WEEK 1	WEEK 2	WEEK 3	WEEK 4	WEEK 1	WEEK 2	WEEK 3	WEEK 4
30-Sep	7-Oct	14-Oct	21-Oct	28-Oct	4-Nov	11-Nov	18-Nov	25-Nov	2-Dec	9-Dec	16-Dec	23-Dec
BUILDING DEMO AND LOAD OUT												
			FOUNDATION DEMO AND LOAD OUT									
					SUPPORT OF EXCAVATION							
						EXCAVATE FOR CONCRETE FOUNDATIONS						
							FORM AND POUT CONCRETE FOUNDATIONS					
											SCHOOL BREAK	



SKANSKA BROOKLINE HIGH SCHOOL EXPANSION PROJECT: MBTA 3 MONTH LOOK AHEAD

OCTOBER					NOVEMBER				DECEMBER			
WEEK 1	WEEK 2	WEEK 3	WEEK 4	WEEK 5	WEEK 1	WEEK 2	WEEK 3	WEEK 4	WEEK 1	WEEK 2	WEEK 3	WEEK 4
30-Sep	7-Oct	14-Oct	21-Oct	28-Oct	4-Nov	11-Nov	18-Nov	25-Nov	2-Dec	9-Dec	16-Dec	23-Dec
ESTABLISH SITE CONTROL												
UNDERGROUND UTILITIES												
NEW HIGH RAIL ACCESS												
									RELOCATE FARE VENDING			
										BEGIN OCS RELOCATIONS		
											SCHOOL BREAK	



BHS Expansion Building Committee Meeting: October 2, 2019

PROCUREMENT SUMMARY BY SUB PROJECT				
	Cypress	STEM	MBTA	B, D, E, F
Estimated Direct Cost + Design and Escalation Contingency	\$60,000,000	\$39,000,000	\$9,000,000	\$19,000,000
Value Procured to Date	\$25,000,000	\$16,000,000	\$3,000,000	\$1,000,000
% of Value Procured to Date	42%	41%	33%	1%
Quantity of Expected Bid Packages	49	60	2	TBD
Bid Packages Procured to Date	11	29	1	TBD
% of Bid Packages Procured to Date	22%	48%	50%	TBD
<ul style="list-style-type: none"> • Values based on reconciled 60% CD Estimate • Procurement completed to date is trending 9% over budget • Received favorable bid results for initial round of trades currently being procured 				

PROCUREMENT SUMMARY BY SUB PROJECT		
Subproject	TRADES PROCURED	TO BE PROCURED
Cypress	Demolition, Sitework, Foundations, Structure, Glass Façade & Elevators	MEP's, Exterior Enclosure, Interior Construction, Interior Finishes, Specialties
STEM	Enabling, Demolition, Sitework, Foundations, Structure, Glass Façade & Elevators	MEP's, Exterior Enclosure, Interior Construction, Interior Finishes, Specialties
MBTA	Enabling and Overhead Catenary	Platform
B, D, E, F	Elevator Modernization	TBD

BHS ADVISORY COMMITTEE MEETING

CRITICAL ISSUES

Procure remaining major bids for MBTA Platform, Cypress, and STEM within next month or two.

Fully execute MBTA Easement / License documents in October, 2019

On-going detailed coordination and planning with MBTA during scheduled diversions



BHS ADVISORY COMMITTEE MEETING

VISIT BHS EXPANSION PROJECT WEBSITE

<http://bhs.brookline.k12.ma.us/expansion-project.html>



END



CYPRESS BUILDING ACCESSIBILITY

OBJECTIVE: EQUITABLE ACCESS TO THE BUILDING AND THE MBTA PLAZA

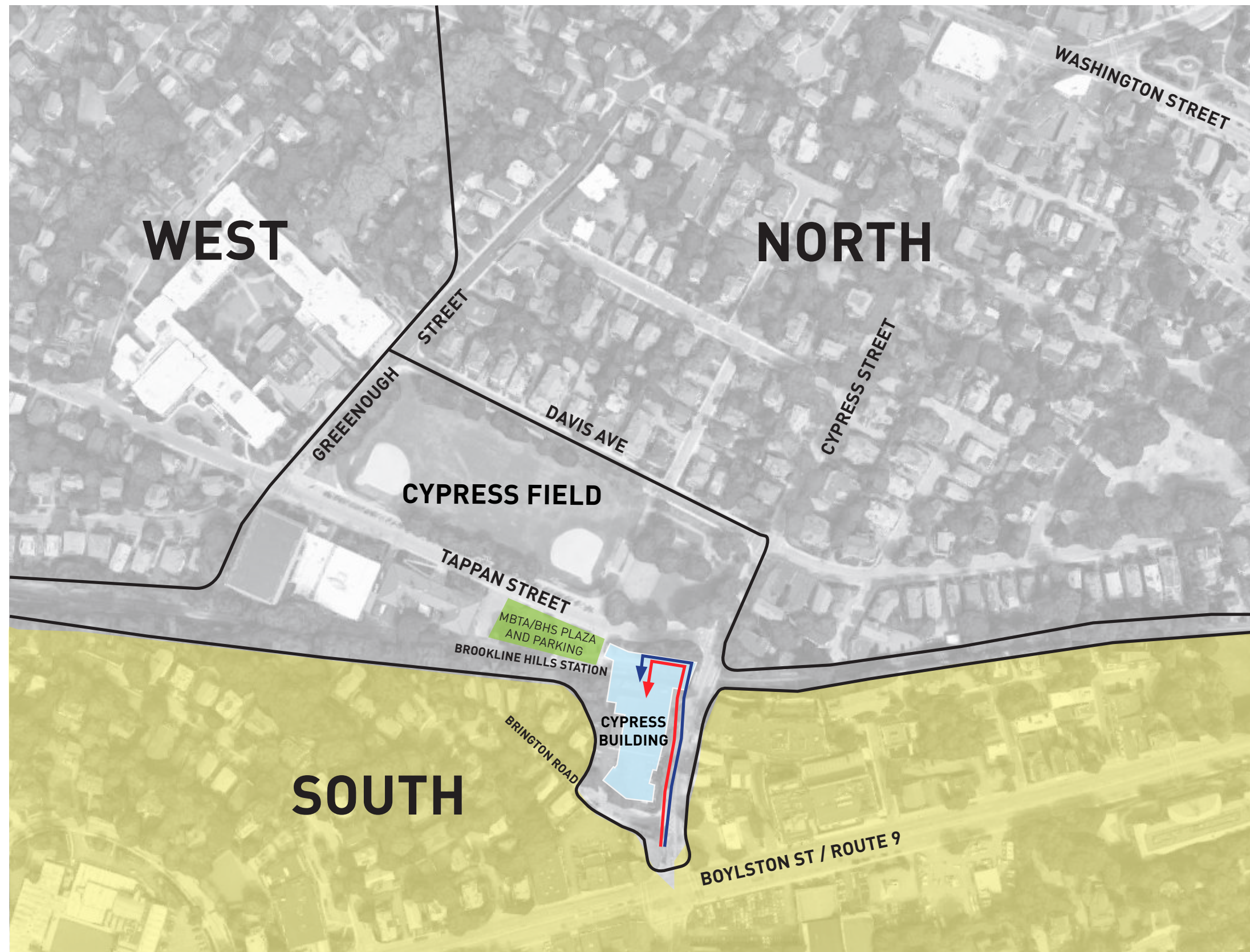
1. BROOKLINE HIGH SCHOOL
STUDENTS / FACULTY / STAFF / VISITORS

2. MBTA USERS





BROOKLINE HIGH SCHOOL USERS

SHORTEST PEDESTRIAN ROUTE FROM THE SOUTH TO FRONT DOOR



DRAFT

-  SHORTEST ROUTE
-  SHORTEST ACCESSIBLE ROUTE





BROOKLINE HIGH SCHOOL USERS

SHORTEST PEDESTRIAN ROUTE FROM THE NORTH TO FRONT DOOR

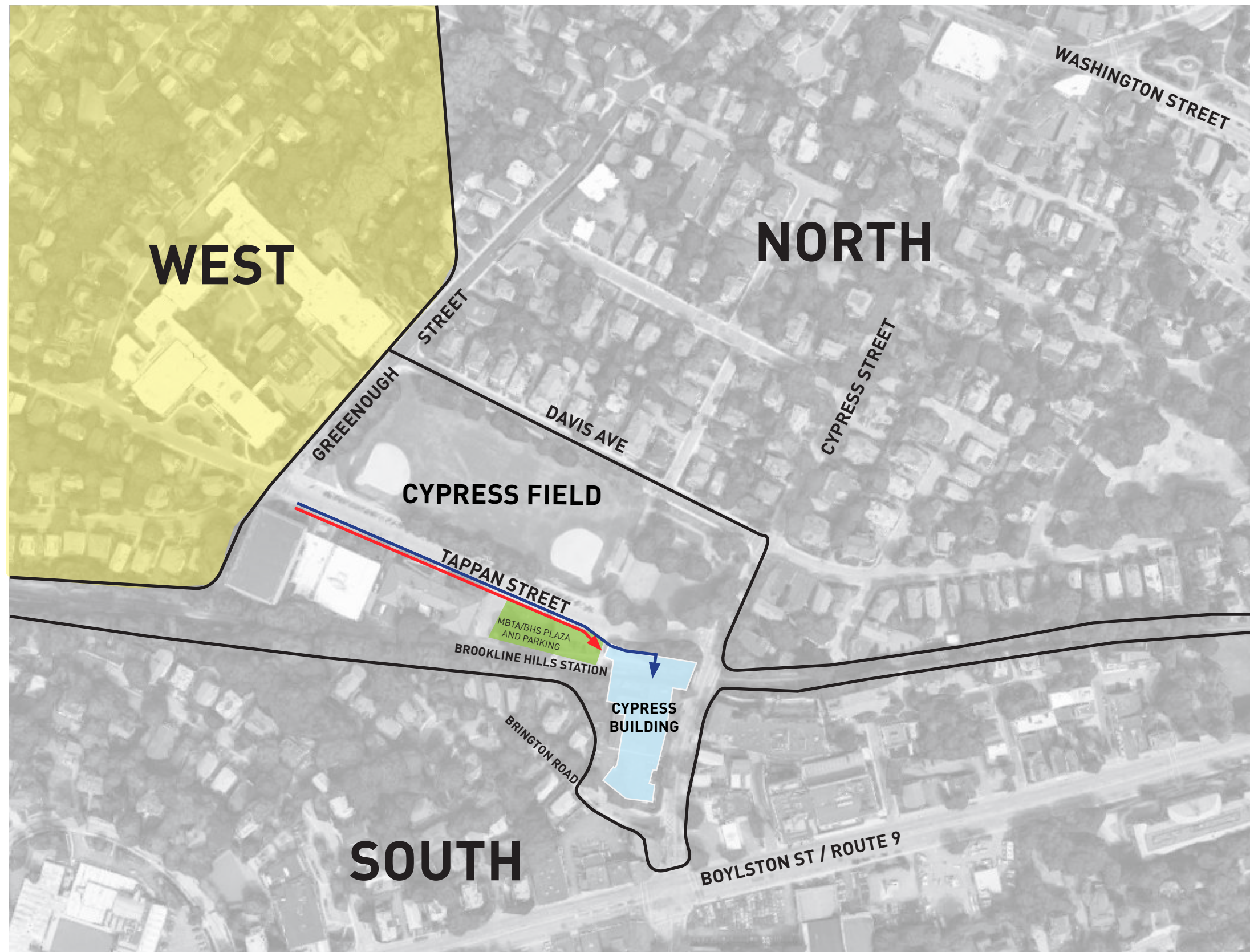


DRAFT

-  SHORTEST ROUTE
-  SHORTEST ACCESSIBLE ROUTE

BROOKLINE HIGH SCHOOL USERS

SHORTEST PEDESTRIAN ROUTE FROM THE WEST TO FRONT DOOR



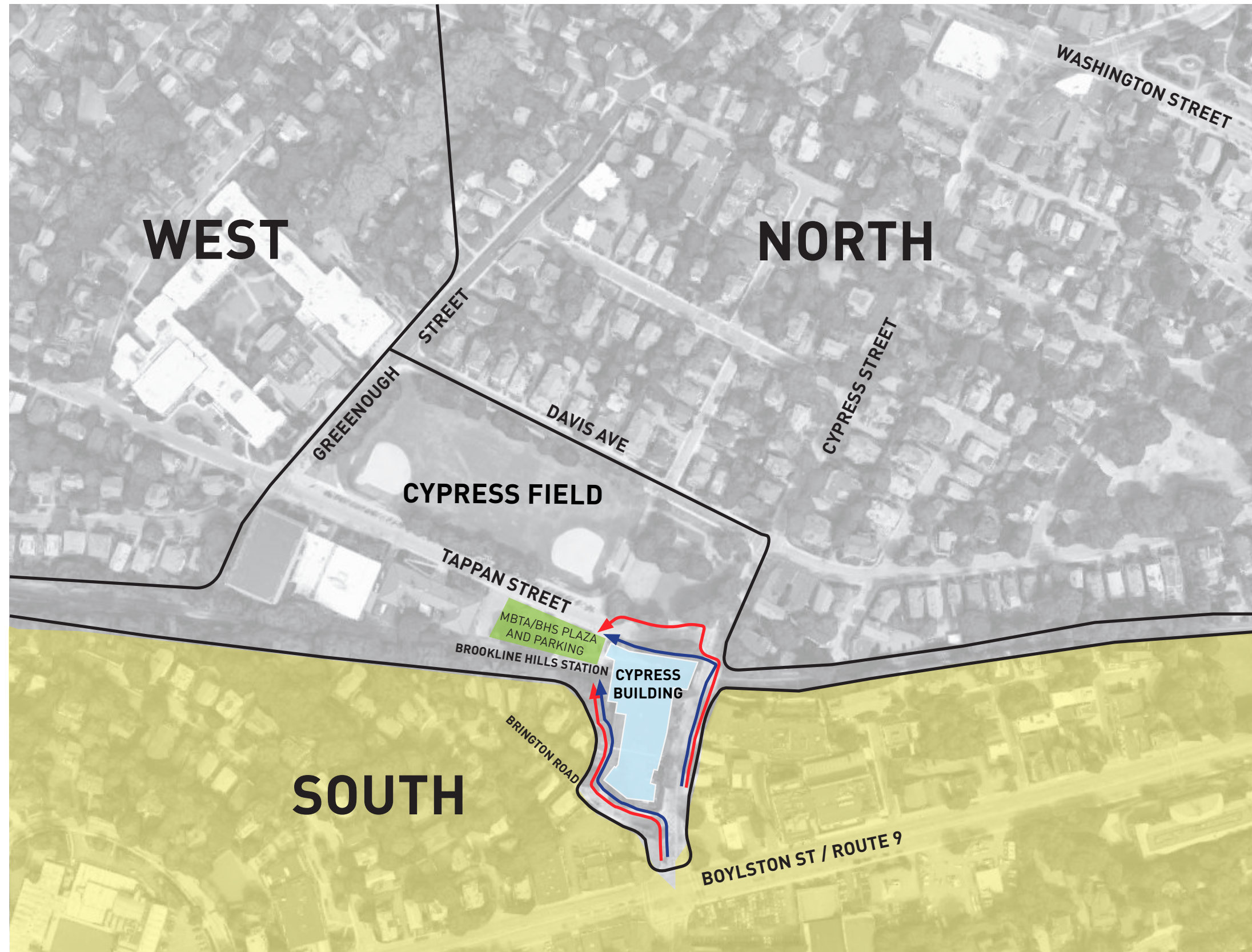
DRAFT

- SHORTEST ROUTE
- SHORTEST ACCESSIBLE ROUTE





MBTA USERS

SHORTEST PEDESTRIAN ROUTE FROM THE SOUTH TO THE BROOKLINE HILLS PLATFORM

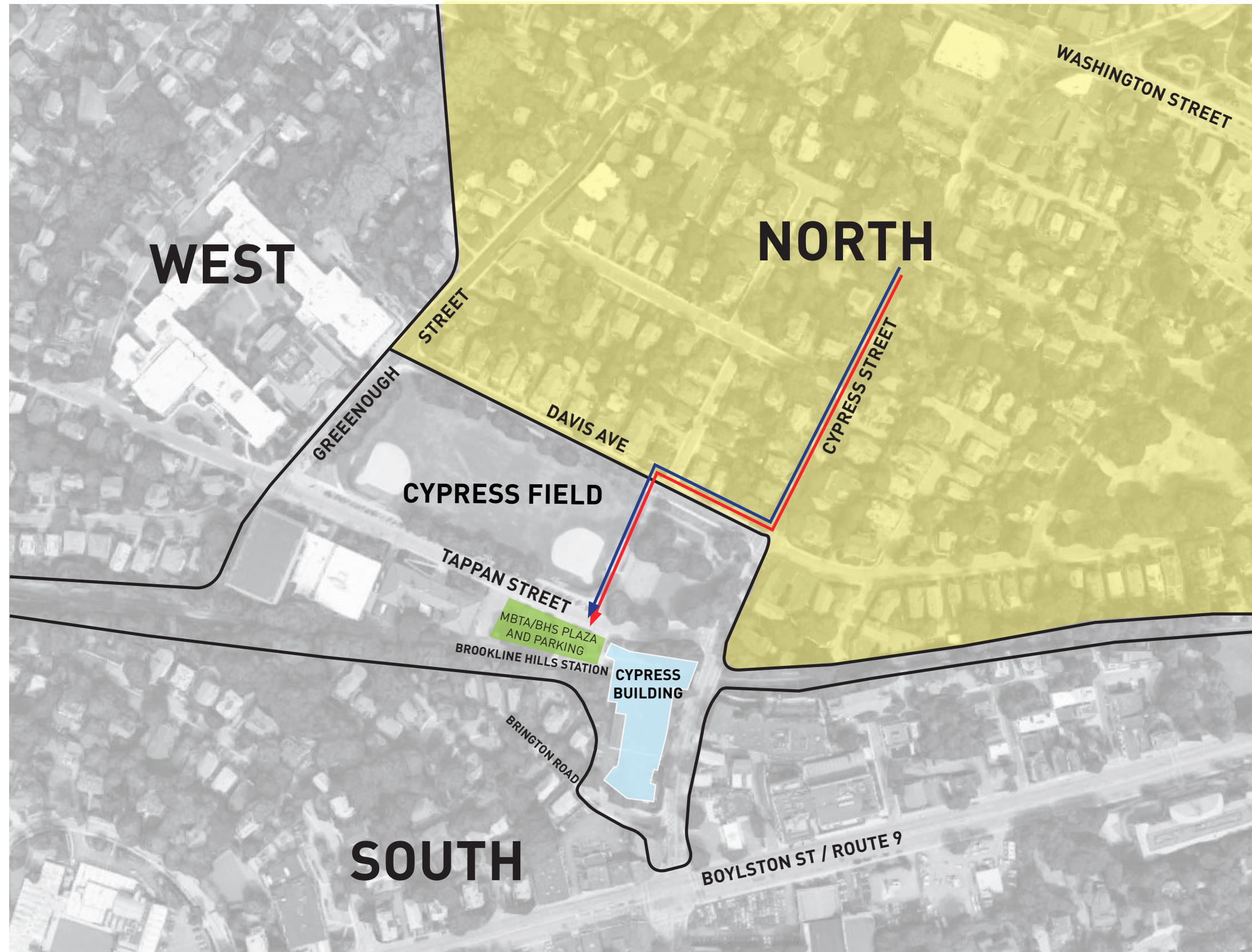


DRAFT



-  SHORTEST ROUTE
-  SHORTEST ACCESSIBLE ROUTE

MBTA USERS

SHORTEST PEDESTRIAN ROUTE FROM THE NORTH TO THE BROOKLINE HILLS PLATFORM



DRAFT

-  SHORTEST ROUTE
-  SHORTEST ACCESSIBLE ROUTE





MBTA USERS

SHORTEST PEDESTRIAN ROUTE FROM THE WEST TO THE BROOKLINE HILLS PLATFORM



DRAFT

-  **SHORTEST ROUTE**
-  **SHORTEST ACCESSIBLE ROUTE**